

---

## Product Datasheet

### BCAP29 Antibody (orb1238485)

**Description**

BCAP29 Antibody

**Species/Host**

Rabbit

**Reactivity**

Human, Mouse, Rat

**Conjugation**

Unconjugated

**Tested**

ELISA, WB

**Applications**
**Immunogen**

BAP29 antibody was raised against a 17 amino acid synthetic peptide from near the center of human Bap29. Bap29 antibody is specific for isoform a of Bap29. The immunogen is located within amino acids 230 - 280 of BAP29.

**Target**

BCAP29

**Preservatives**

BAP29 Antibody is supplied in PBS containing 0.02% sodium azide.

**Form/Appearance**

Liquid

**Concentration**

1 mg/mL

**Storage**

BAP29 antibody can be stored at 4°C for three months and -20°C, stable for up to one year. As with all antibodies care should be taken to avoid repeated freeze thaw cycles. Antibodies should not be exposed to prolonged high temperatures.

**Note**

For research use only

**Application notes**

Bap29 antibody can be used for the detection of Bap29 by Western blot at 1 - 2 µg/mL. Antibody validated: Western Blot in human samples. All other applications and species not yet tested.

**Isotype**

IgG

**Clonality**

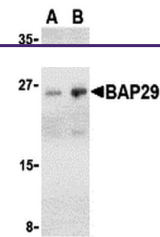
Polyclonal

**Uniprot ID**
[Q9UHQ4](#)
**NCBI**
[NP\\_001008405](#)
**Dilution Range**

Bap29 antibody can be used for the detection of Bap29 by Western blot at 1 - 2 µg/mL. Antibody validated: Western Blot in human samples. All other applications and species not yet tested.

**Expiration Date**

12 months from date of receipt.



Western blot analysis of Bap29 in human ...