
Product Datasheet

ACTB Antibody (Biotin) (orb1238478)

Description

ACTB Antibody (Biotin)

Species/Host

Rabbit

Reactivity

Drosophila, Gallus, Human, Mouse, Rabbit, Rat

Conjugation

Biotin

Tested

ELISA, WB

Applications
Immunogen

Biotin-Beta-Actin antibody was raised against a synthetic peptide containing 16 amino acids near the amino terminus of beta-actin.

Target

ACTB

Preservatives

Biotin-Beta-Actin antibody is supplied in PBS containing 1% rAlbumin and 0.02% sodium azide.

Form/Appearance

Liquid

Concentration

1 mg/mL

Storage

Biotin-Beta-Actin antibody can be stored at 4°C for three months and -20°C, stable for up to one year.

Note

For research use only

Application notes

Biotin-Beta-Actin antibody can be used for detection of Beta-Actin by Western blot at 0.5 - 1 µ/ml. Antibody validated: Western Blot in human, mouse, and rat samples. All other applications and species not yet tested.

Isotype

IgG

Clonality

Polyclonal

MW

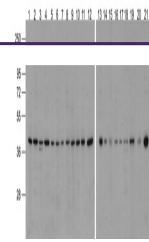
Predicted: 42 kDa Observed: 42 kDa

Uniprot ID
[P60709](#)
NCBI
[AAH02409](#)
Dilution Range

Biotin-Beta-Actin antibody can be used for detection of Beta-Actin by Western blot at 0.5 - 1 µ/ml. Antibody validated: Western Blot in human, mouse, and rat samples. All other applications and species not yet tested.

Expiration Date

12 months from date of receipt.



Western blot analysis of Actin in 293, A...