
Product Datasheet

CARD14 Antibody (orb1238464)

Description

CARD14 Antibody

Species/Host

Rabbit

Reactivity

Human

Conjugation

Unconjugated

Tested

ELISA, IHC-P

Applications
Immunogen

CARMA2 antibody was raised against a 14 amino acid synthetic peptide near the carboxy terminus of human CARMA2. The immunogen is located within the last 50 amino acids of CARMA2.

Target

CARD14

Preservatives

CARMA2 Antibody is supplied in PBS containing 0.02% sodium azide.

Form/Appearance

Liquid

Concentration

1 mg/mL

Storage

CARMA2 antibody can be stored at 4°C for three months and -20°C, stable for up to one year. As with all antibodies care should be taken to avoid repeated freeze thaw cycles. Antibodies should not be exposed to prolonged high temperatures.

Note

For research use only

Application notes

CARMA2 antibody can be used for detection of CARMA2 by immunohistochemistry at 5 µg/mL. Antibody validated: Immunohistochemistry in human samples. All other applications and species not yet tested.

Isotype

IgG

Clonality

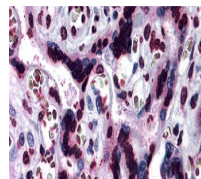
Polyclonal

Uniprot ID
[Q9BXL6](#)
NCBI
[NP_077015](#)
Dilution Range

CARMA2 antibody can be used for detection of CARMA2 by immunohistochemistry at 5 µg/mL. Antibody validated: Immunohistochemistry in human samples. All other applications and species not yet tested.

Expiration Date

12 months from date of receipt.



Immunohistochemistry of CARMA2 in human

...