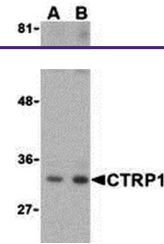

Product Datasheet

C1QTNF1 Antibody (orb1238437)

Description	C1QTNF1 Antibody
Species/Host	Rabbit
Reactivity	Human, Mouse
Conjugation	Unconjugated
Tested Applications	ELISA, WB
Immunogen	CTRP1 (IN) antibody was raised against a 16 amino acid synthetic peptide from near the center of human CTRP1. The immunogen is located within amino acids 80 - 130 of CTRP1.
Target	C1QTNF1
Preservatives	CTRP1 Antibody is supplied in PBS containing 0.02% sodium azide.
Form/Appearance	Liquid
Concentration	1 mg/mL
Storage	CTRP1 antibody can be stored at 4°C for three months and -20°C, stable for up to one year. As with all antibodies care should be taken to avoid repeated freeze thaw cycles. Antibodies should not be exposed to prolonged high temperatures.
Note	For research use only
Application notes	CTRP1 antibody can be used for the detection of CTRP1 by Western blot at 1 and 2 µg/mL. Antibody validated: Western Blot in human samples. All other applications and species not yet tested.
Isotype	IgG
Clonality	Polyclonal
Uniprot ID	Q9BXJ1
NCBI	NP_940995
Dilution Range	CTRP1 antibody can be used for the detection of CTRP1 by Western blot at 1 and 2 µg/mL. Antibody validated: Western Blot in human samples. All other applications and species not yet tested.
Expiration Date	12 months from date of receipt.



Western blot analysis of CTRP1 in MDA-MD...