
Product Datasheet

C1QTNF2 Antibody (orb1238436)

Description

C1QTNF2 Antibody

Species/Host

Rabbit

Reactivity

Human, Mouse

Conjugation

Unconjugated

Tested Applications

ELISA, WB

Immunogen

CTRP2 antibody was raised against a 16 amino acid synthetic peptide from near the amino-terminus of human CTRP2. The immunogen is located within amino acids 50 - 100 of CTRP2.

Target

C1QTNF2

Preservatives

CTRP2 Antibody is supplied in PBS containing 0.02% sodium azide.

Form/Appearance

Liquid

Concentration

1 mg/mL

Storage

CTRP2 antibody can be stored at 4°C for three months and -20°C, stable for up to one year. As with all antibodies care should be taken to avoid repeated freeze thaw cycles. Antibodies should not be exposed to prolonged high temperatures.

Note

For research use only

Application notes

CTRP2 antibody can be used for the detection of CTRP2 by Western blot at 1 µg/mL. Antibody validated: Western Blot in human samples. All other applications and species not yet tested.

Isotype

IgG

Clonality

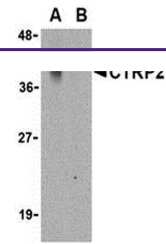
Polyclonal

Uniprot ID
[Q9BXJ5](#)
NCBI
[NP_114114](#)
Dilution Range

CTRP2 antibody can be used for the detection of CTRP2 by Western blot at 1 µg/mL. Antibody validated: Western Blot in human samples. All other applications and species not yet tested.

Expiration Date

12 months from date of receipt.



Western blot analysis of CTRP2 in Caco-2...