
Product Datasheet

C1QTNF5 Antibody (orb1238435)

Description

C1QTNF5 Antibody

Species/Host

Rabbit

Reactivity

Human

Conjugation

Unconjugated

Tested Applications

ELISA, WB

Immunogen

CTRP5 antibody was raised against a 15 amino acid synthetic peptide from near the center of human CTRP5. The immunogen is located within amino acids 90 - 140 of CTRP5.

Target

C1QTNF5

Preservatives

CTRP5 Antibody is supplied in PBS containing 0.02% sodium azide.

Form/Appearance

Liquid

Concentration

1 mg/mL

Storage

CTRP5 antibody can be stored at 4°C for three months and -20°C, stable for up to one year. As with all antibodies care should be taken to avoid repeated freeze thaw cycles. Antibodies should not be exposed to prolonged high temperatures.

Note

For research use only

Application notes

CTRP5 antibody can be used for the detection of CTRP5 by Western blot at 1 - 4 µg/mL. Antibody validated: Western Blot in human samples. All other applications and species not yet tested.

Isotype

IgG

Clonality

Polyclonal

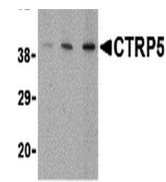
Uniprot ID
[Q9BXJ0](#)
NCBI
[AAQ88749](#)
Dilution Range

CTRP5 antibody can be used for the detection of CTRP5 by Western blot at 1 - 4 µg/mL. Antibody validated: Western Blot in human samples. All other applications and species not yet tested.

Expiration Date

12 months from date of receipt.

A B C



Western blot analysis of CTRP5 in caco-2...