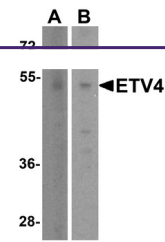

Product Datasheet

ETV4 Antibody (orb1238410)

Description	ETV4 Antibody
Species/Host	Rabbit
Reactivity	Human, Mouse, Rat
Conjugation	Unconjugated
Tested Applications	ELISA, WB
Immunogen	ETV4 antibody was raised against a peptide corresponding to 19 amino acids near the amino terminus of human ETV4.
Target	ETV4
Preservatives	ETV4 Antibody is supplied in PBS containing 0.02% sodium azide.
Form/Appearance	Liquid
Concentration	1 mg/mL
Storage	ETV4 antibody can be stored at 4°C for three months and -20°C, stable for up to one year. As with all antibodies care should be taken to avoid repeated freeze thaw cycles. Antibodies should not be exposed to prolonged high temperatures.
Note	For research use only
Application notes	ETV4 antibody can be used for Western blot at 1 - 2 µg/mL. Antibody validated: Western Blot in human samples. All other applications and species not yet tested.
Isotype	IgG
Clonality	Polyclonal
MW	Predicted: 53 kDa Observed: 53 kDa
Uniprot ID	P43268
NCBI	NP_001977
Dilution Range	ETV4 antibody can be used for Western blot at 1 - 2 µg/mL. Antibody validated: Western Blot in human samples. All other applications and species not yet tested.
Expiration Date	12 months from date of receipt.



Western blot analysis of ETV4 in (A) hum...