
Product Datasheet

GAPDH Antibody (Biotin) (orb1238398)

Description

GAPDH Antibody (Biotin)

Species/Host

Rabbit

Reactivity

Gallus, Human, Mouse, Rabbit, Rat

Conjugation

Biotin

Tested Applications

ELISA, WB

Immunogen

Biotin-GAPDH antibody was raised against a synthetic peptide containing 16 amino acids near the carboxy terminus of GAPDH.

Target

GAPDH

Preservatives

Biotin-GAPDH antibody is supplied in PBS containing 1% rAlbumin and 0.02% sodium azide.

Form/Appearance

Liquid

Concentration

1 mg/mL

Storage

Biotin-GAPDH antibody can be stored at 4°C for three months and -20°C, stable for up to one year.

Note

For research use only

Application notes

Biotin-GAPDH antibody can be used for detection of GAPDH by Western blot at 0.5 - 1 µ/ml. Antibody validated: Western Blot in human, mouse, and rat samples. All other applications and species not yet tested.

Isotype

IgG

Clonality

Polyclonal

MW

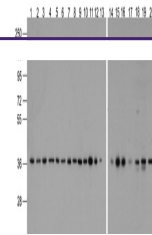
Predicted: 37 kDa Observed: 36 kDa

Uniprot ID
[P04406](#)
NCBI
[NP_002037](#)
Dilution Range

Biotin-GAPDH antibody can be used for detection of GAPDH by Western blot at 0.5 - 1 µ/ml. Antibody validated: Western Blot in human, mouse, and rat samples. All other applications and species not yet tested.

Expiration Date

12 months from date of receipt.



Western blot analysis of GAPDH in 293, A...