

---

## Product Datasheet

### GAPDH Antibody (Biotin) (orb1238397)

**Description**

GAPDH Antibody (Biotin)

**Species/Host**

Mouse

**Reactivity**

Human, Mouse, Rabbit, Rat

**Conjugation**

Biotin

**Tested Applications**

ELISA, WB

**Immunogen**

Biotin-GAPDH antibody was raised against a 16 amino acid peptide near the carboxy terminus of human GAPDH.

**Target**

GAPDH

**Preservatives**

Biotin-GAPDH antibody is supplied in PBS containing 1% rAlbumin and 0.02% sodium azide.

**Form/Appearance**

Liquid

**Concentration**

1 mg/mL

**Storage**

Biotin-GAPDH antibody can be stored at 4°C for three months and -20°C, stable for up to one year.

**Note**

For research use only

**Application notes**

Biotin-GAPDH antibody can be used for detection of GAPDH by Western blot at 1 - 2 µg/ml. Antibody validated: Western Blot in human, mouse, and rat samples. All other applications and species not yet tested.

**Isotype**

IgG

**Clonality**

Monoclonal

**MW**

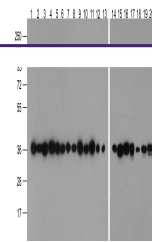
Predicted: 37 kDa Observed: 36 kDa

**Uniprot ID**
[P04406](#)
**NCBI**
[NP\\_002037](#)
**Dilution Range**

Biotin-GAPDH antibody can be used for detection of GAPDH by Western blot at 1 - 2 µg/ml. Antibody validated: Western Blot in human, mouse, and rat samples. All other applications and species not yet tested.

**Expiration Date**

12 months from date of receipt.



Western blot analysis of GAPDH in multip...