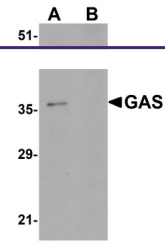

Product Datasheet

PAGR1 Antibody (orb1238395)

Description	PAGR1 Antibody
Species/Host	Rabbit
Reactivity	Human, Mouse
Conjugation	Unconjugated
Tested Applications	ELISA, WB
Immunogen	GAS antibody was raised against a 15 amino acid synthetic peptide from near the carboxy terminus of human GAS. The immunogen is located within the last 50 amino acids of GAS.
Target	PAGR1
Preservatives	GAS Antibody is supplied in PBS containing 0.02% sodium azide.
Form/Appearance	Liquid
Concentration	1 mg/mL
Storage	GAS antibody can be stored at 4°C for three months and -20°C, stable for up to one year. As with all antibodies care should be taken to avoid repeated freeze thaw cycles. Antibodies should not be exposed to prolonged high temperatures.
Note	For research use only
Application notes	GAS antibody can be used for detection of GAS by Western blot at 1 µg/mL. Antibody validated: Western Blot in mouse samples. All other applications and species not yet tested.
Isotype	IgG
Clonality	Polyclonal
Uniprot ID	Q9BTK6
NCBI	NP_078792
Dilution Range	GAS antibody can be used for detection of GAS by Western blot at 1 µg/mL. Antibody validated: Western Blot in mouse samples. All other applications and species not yet tested.
Expiration Date	12 months from date of receipt.



Western blot analysis of GAS in EL4 cell...