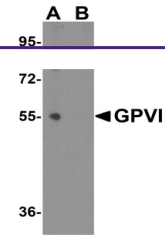

Product Datasheet

GP6 Antibody (orb1238387)

Description	GP6 Antibody
Species/Host	Rabbit
Reactivity	Human, Mouse, Rat
Conjugation	Unconjugated
Tested Applications	ELISA, WB
Immunogen	GPVI antibody was raised against a 18 amino acid synthetic peptide near the center of the human GPVI. The immunogen is located within amino acids 130 - 180 of GPVI.
Target	GP6
Preservatives	GPVI Antibody is supplied in PBS containing 0.02% sodium azide.
Form/Appearance	Liquid
Concentration	1 mg/mL
Storage	GPVI antibody can be stored at 4°C for three months and -20°C, stable for up to one year. As with all antibodies care should be taken to avoid repeated freeze thaw cycles. Antibodies should not be exposed to prolonged high temperatures.
Note	For research use only
Application notes	GPVI antibody can be used for detection of GPVI by Western blot at 1 µg/mL. Antibody validated: Western Blot in human samples. All other applications and species not yet tested.
Isotype	IgG
Clonality	Polyclonal
MW	Predicted: 37, 68 kDa Observed: 55 kDa
Uniprot ID	Q9HCN6
NCBI	NP_057447
Dilution Range	GPVI antibody can be used for detection of GPVI by Western blot at 1 µg/mL. Antibody validated: Western Blot in human samples. All other applications and species not yet tested.
Expiration Date	12 months from date of receipt.



Western blot analysis of GPVI expression...