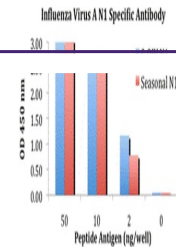


---

## Product Datasheet

### NA Antibody (orb1238382)

<b>Description</b>	NA Antibody
<b>Species/Host</b>	Rabbit
<b>Reactivity</b>	Virus
<b>Conjugation</b>	Unconjugated
<b>Tested Applications</b>	ELISA
<b>Immunogen</b>	Neuraminidase antibody was raised against synthetic peptides from the seasonal influenza (H1N1) Neuraminidase protein and the novel swine influenza Neuraminidase protein. The antibody recognizes both variants. The immunogen is located within the first 50 amino acids of H1N1 Neuraminidase.
<b>Target</b>	NA
<b>Preservatives</b>	H1N1 Neuraminidase Antibody is supplied in PBS containing 0.02% sodium azide.
<b>Form/Appearance</b>	Liquid
<b>Concentration</b>	1 mg/mL
<b>Storage</b>	H1N1 Neuraminidase antibody can be stored at 4°C for three months and -20°C, stable for up to one year. As with all antibodies care should be taken to avoid repeated freeze thaw cycles. Antibodies should not be exposed to prolonged high temperatures.
<b>Note</b>	For research use only
<b>Application notes</b>	Neuraminidase antibody can be used for the detection of the Neuraminidase protein from the seasonal influenza A (H1N1) and the novel swine influenza in ELISA. It will detect 2 ng of free peptide at 1 µg/mL.
<b>Isotype</b>	IgG
<b>Clonality</b>	Polyclonal
<b>Uniprot ID</b>	<a href="#">B1AGS8</a> , <a href="#">C4AL28</a>
<b>NCBI</b>	<a href="#">ACA33620</a> , <a href="#">ACQ76308</a>
<b>Dilution Range</b>	Neuraminidase antibody can be used for the detection of the Neuraminidase protein from the seasonal influenza A (H1N1) and the novel swine influenza in ELISA. It will detect 2 ng of free peptide at 1 µg/mL.
<b>Expiration Date</b>	12 months from date of receipt.



ELISA results using H1N1 Neuraminidase a...