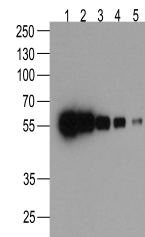


Product Datasheet

HAT-tag Antibody [4A6F3] (biotin) (orb1238381)

Description	HAT-tag Antibody [4A6F3] (biotin)
Species/Host	Mouse
Reactivity	Tag
Conjugation	Biotin
Tested Applications	ELISA, WB
Immunogen	HAT-tag antibody was raised against a synthetic peptide containing KDHLIHNVHKEFHAAHANK.
Preservatives	HAT-tag antibody is supplied in PBS containing 1% rAlbumin and 0.02% sodium azide.
Form/Appearance	Liquid
Concentration	1 mg/mL
Storage	HAT-tag antibody can be stored at 4°C for three months and -20°C, stable for up to one year.
Note	For research use only
Application notes	HAT-tag antibody can be used for detection of HAT-tag epitope-containing recombinant proteins by Western blot at 0.5 - 1 µ/ml.
Isotype	IgG
Clonality	Monoclonal
Dilution Range	HAT-tag antibody can be used for detection of HAT-tag epitope-containing recombinant proteins by Western blot at 0.5 - 1 µ/ml.
Expiration Date	12 months from date of receipt.



Western blot analysis (1) 200ng, (2) 100...