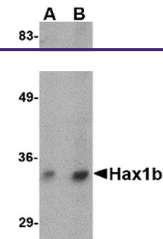


Product Datasheet

HAX1 Antibody (orb1238376)

Description	HAX1 Antibody
Species/Host	Rabbit
Reactivity	Human, Mouse, Rat
Conjugation	Unconjugated
Tested Applications	ELISA, WB
Immunogen	Hax1b antibody was raised against a 10 amino acid synthetic peptide near the amino terminus of human Hax1b. The immunogen is located within the first 50 amino acids of Hax1b.
Target	HAX1
Preservatives	Hax1b Antibody is supplied in PBS containing 0.02% sodium azide.
Form/Appearance	Liquid
Concentration	1 mg/mL
Storage	Hax1b antibody can be stored at 4°C for three months and -20°C, stable for up to one year. As with all antibodies care should be taken to avoid repeated freeze thaw cycles. Antibodies should not be exposed to prolonged high temperatures.
Note	For research use only
Application notes	Hax1b antibody can be used for detection of Hax1b by Western blot at 1 - 2 µg/mL. Antibody validated: Western Blot in mouse samples. All other applications and species not yet tested.
Isotype	IgG
Clonality	Polyclonal
Uniprot ID	O00165
NCBI	NP_001018238
Dilution Range	Hax1b antibody can be used for detection of Hax1b by Western blot at 1 - 2 µg/mL. Antibody validated: Western Blot in mouse samples. All other applications and species not yet tested.
Expiration Date	12 months from date of receipt.



Western blot analysis of Hax1b in mouse ...