
Product Datasheet

HIGD2A Antibody (orb1238366)

Description

HIGD2A Antibody

Species/Host

Rabbit

Reactivity

Human, Mouse

Conjugation

Unconjugated

Tested

ELISA, WB

Applications
Immunogen

HIG2 antibody was raised against a 16 amino acid synthetic peptide near the carboxy terminus of human HIG2. The immunogen is located within the last 50 amino acids of HIG2.

Target

HIGD2A

Preservatives

HIG2 Antibody is supplied in PBS containing 0.02% sodium azide.

Form/Appearance

Liquid

Concentration

1 mg/mL

Storage

HIG2 antibody can be stored at 4°C for three months and -20°C, stable for up to one year. As with all antibodies care should be taken to avoid repeated freeze thaw cycles. Antibodies should not be exposed to prolonged high temperatures.

Note

For research use only

Application notes

HIG2 antibody can be used for detection of HIG2 by Western blot at 1 µg/mL. Antibody validated: Western Blot in human samples. All other applications and species not yet tested.

Isotype

IgG

Clonality

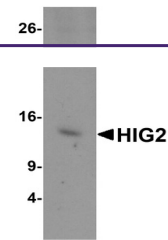
Polyclonal

Uniprot ID
[Q9BW72](#)
NCBI
[NP_001092256](#)
Dilution Range

HIG2 antibody can be used for detection of HIG2 by Western blot at 1 µg/mL. Antibody validated: Western Blot in human samples. All other applications and species not yet tested.

Expiration Date

12 months from date of receipt.



Western blot analysis of HIG2 in A549 ce...