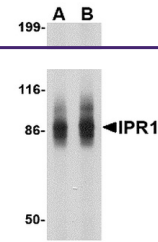

Product Datasheet

SP110 Antibody (orb1238351)

Description	SP110 Antibody
Species/Host	Rabbit
Reactivity	Human, Mouse, Rat
Conjugation	Unconjugated
Tested Applications	ELISA, WB
Immunogen	IPR1 antibody was raised against a 16 amino acid synthetic peptide near the amino terminus of the human IPR1. The immunogen is located within amino acids 70 - 120 of IPR1.
Target	SP110
Preservatives	IPR1 Antibody is supplied in PBS containing 0.02% sodium azide.
Form/Appearance	Liquid
Concentration	1 mg/mL
Storage	IPR1 antibody can be stored at 4°C for three months and -20°C, stable for up to one year. As with all antibodies care should be taken to avoid repeated freeze thaw cycles. Antibodies should not be exposed to prolonged high temperatures.
Note	For research use only
Application notes	Ipr1 antibody can be used for detection of Ipr1 by Western blot at 1 - 2 µg/mL. Antibody validated: Western Blot in human samples. All other applications and species not yet tested.
Isotype	IgG
Clonality	Polyclonal
Uniprot ID	Q9HB58
NCBI	NP_004501
Dilution Range	Ipr1 antibody can be used for detection of Ipr1 by Western blot at 1 - 2 µg/mL. Antibody validated: Western Blot in human samples. All other applications and species not yet tested.
Expiration Date	12 months from date of receipt.



Western blot analysis of IPR1 in SW480 c...