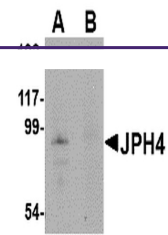

Product Datasheet

JPH4 Antibody (orb1238343)

Description	JPH4 Antibody
Species/Host	Rabbit
Reactivity	Human, Mouse, Rat
Conjugation	Unconjugated
Tested Applications	ELISA, WB
Immunogen	JPH4 antibody was raised against a 17 amino acid synthetic peptide near the center of human JPH4. The immunogen is located within amino acids 410 - 460 of JPH4.
Target	JPH4
Preservatives	JPH4 Antibody is supplied in PBS containing 0.02% sodium azide.
Form/Appearance	Liquid
Concentration	1 mg/mL
Storage	JPH4 antibody can be stored at 4°C for three months and -20°C, stable for up to one year. As with all antibodies care should be taken to avoid repeated freeze thaw cycles. Antibodies should not be exposed to prolonged high temperatures.
Note	For research use only
Application notes	JPH4 antibody can be used for detection of JPH4 by Western blot at 1 µg/mL. Antibody validated: Western Blot in mouse samples. All other applications and species not yet tested.
Isotype	IgG
Clonality	Polyclonal
Uniprot ID	Q96JJ6
NCBI	AAH55429
Dilution Range	JPH4 antibody can be used for detection of JPH4 by Western blot at 1 µg/mL. Antibody validated: Western Blot in mouse samples. All other applications and species not yet tested.
Expiration Date	12 months from date of receipt.



Western blot analysis of JPH4 in mouse brain tissue.