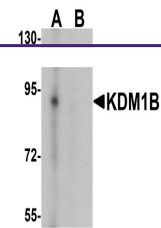

Product Datasheet

KDM1B Antibody (orb1238341)

| Description | KDM1B Antibody |
|----------------------------|---|
| Species/Host | Rabbit |
| Reactivity | Human, Mouse |
| Conjugation | Unconjugated |
| Tested Applications | ELISA, WB |
| Immunogen | KDM1B antibody was raised against a 17 amino acid peptide near the amino terminus of human KDM1B. The immunogen is located within amino acids 80 - 130 of KDM1B. |
| Target | KDM1B |
| Preservatives | KDM1B antibody is supplied in PBS containing 0.02% sodium azide. |
| Form/Appearance | Liquid |
| Concentration | 1 mg/mL |
| Storage | KDM1B antibody can be stored at 4°C for three months and -20°C, stable for up to one year. |
| Note | For research use only |
| Application notes | KDM1B antibody can be used for detection of KDM1B by Western blot at 0.5 µg/ml. Antibody validated: Western Blot in human samples. All other applications and species not yet tested. |
| Isotype | IgG |
| Clonality | Polyclonal |
| MW | Predicted: 90 kDa Observed: 90 kDa |
| Uniprot ID | Q8NB78 |
| NCBI | NP_694587 |
| Dilution Range | KDM1B antibody can be used for detection of KDM1B by Western blot at 0.5 µg/ml. Antibody validated: Western Blot in human samples. All other applications and species not yet tested. |
| Expiration Date | 12 months from date of receipt. |



Western blot analysis of KDM1B in K562 c...