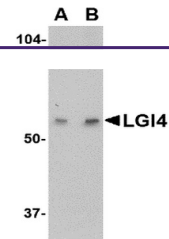

Product Datasheet

LGI4 Antibody (orb1238329)

| Description | LGI4 Antibody |
|----------------------------|--|
| Species/Host | Rabbit |
| Reactivity | Human, Mouse, Rat |
| Conjugation | Unconjugated |
| Tested Applications | ELISA, WB |
| Immunogen | LGI4 antibody was raised against a 14 amino acid synthetic peptide from near the center of human LGI4. The immunogen is located within amino acids 240 - 290 of LGI4. |
| Target | LGI4 |
| Preservatives | LGI4 Antibody is supplied in PBS containing 0.02% sodium azide. |
| Form/Appearance | Liquid |
| Concentration | 1 mg/mL |
| Storage | LGI4 antibody can be stored at 4°C for three months and -20°C, stable for up to one year. As with all antibodies care should be taken to avoid repeated freeze thaw cycles. Antibodies should not be exposed to prolonged high temperatures. |
| Note | For research use only |
| Application notes | LGI4 antibody can be used for the detection of LGI4 by Western blot at 1 - 2 µg/mL. Antibody validated: Western Blot in human samples. All other applications and species not yet tested. |
| Isotype | IgG |
| Clonality | Polyclonal |
| Uniprot ID | Q8N135 |
| NCBI | AAM49552 |
| Dilution Range | LGI4 antibody can be used for the detection of LGI4 by Western blot at 1 - 2 µg/mL. Antibody validated: Western Blot in human samples. All other applications and species not yet tested. |
| Expiration Date | 12 months from date of receipt. |



Western blot analysis of LGI4 in human b...