
Product Datasheet

NLRP4 Antibody (orb1238304)

Description

NLRP4 Antibody

Species/Host

Rabbit

Reactivity

Human, Mouse

Conjugation

Unconjugated

Tested

ELISA, WB

Applications
Immunogen

NALP4 antibody was raised against a 13 amino acid synthetic peptide near the center of human NALP4. The immunogen is located within amino acids 330 - 380 of NALP4.

Target

NLRP4

Preservatives

NALP4 Antibody is supplied in PBS containing 0.02% sodium azide.

Form/Appearance

Liquid

Concentration

1 mg/mL

Storage

NALP4 antibody can be stored at 4°C for three months and -20°C, stable for up to one year. As with all antibodies care should be taken to avoid repeated freeze thaw cycles. Antibodies should not be exposed to prolonged high temperatures.

Note

For research use only

Application notes

NALP4 antibody can be used for detection of NALP4 by Western blot at 1 µg/mL. Antibody validated: Western Blot in human samples. All other applications and species not yet tested.

Isotype

IgG

Clonality

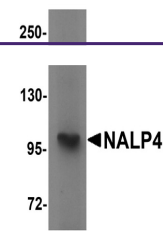
Polyclonal

Uniprot ID
[Q96MN2](#)
NCBI
[AAL35293](#)
Dilution Range

NALP4 antibody can be used for detection of NALP4 by Western blot at 1 µg/mL. Antibody validated: Western Blot in human samples. All other applications and species not yet tested.

Expiration Date

12 months from date of receipt.



Western blot analysis of NALP4 in K562 c...