

---

## Product Datasheet

### NANOS2 Antibody (orb1238302)

**Description**

NANOS2 Antibody

**Species/Host**

Rabbit

**Reactivity**

Human, Mouse, Rat

**Conjugation**

Unconjugated

**Tested**

ELISA, WB

**Applications**
**Immunogen**

Nanos2 antibody was raised against a 13 amino acid synthetic peptide near the carboxy terminus of the human Nanos2. The immunogen is located within the last 50 amino acids of Nanos2.

**Target**

NANOS2

**Preservatives**

Nanos2 Antibody is supplied in PBS containing 0.02% sodium azide.

**Form/Appearance**

Liquid

**Concentration**

1 mg/mL

**Storage**

Nanos2 antibody can be stored at 4°C for three months and -20°C, stable for up to one year. As with all antibodies care should be taken to avoid repeated freeze thaw cycles. Antibodies should not be exposed to prolonged high temperatures.

**Note**

For research use only

**Application notes**

Nanos2 antibody can be used for detection of Nanos2 by Western blot at 2 to 4 µg/mL. Antibody validated: Western Blot in human samples. All other applications and species not yet tested.

**Isotype**

IgG

**Clonality**

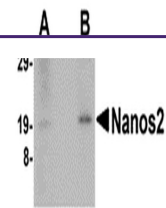
Polyclonal

**Uniprot ID**
[P60321](#)
**NCBI**
[P60321](#)
**Dilution Range**

Nanos2 antibody can be used for detection of Nanos2 by Western blot at 2 to 4 µg/mL. Antibody validated: Western Blot in human samples. All other applications and species not yet tested.

**Expiration Date**

12 months from date of receipt.



Western blot analysis of Nanos2 in human...