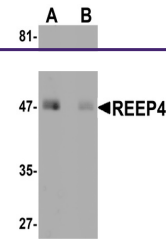

Product Datasheet

REEP4 Antibody (orb1238265)

Description	REEP4 Antibody
Species/Host	Rabbit
Reactivity	Human, Mouse, Rat
Conjugation	Unconjugated
Tested Applications	ELISA, WB
Immunogen	REEP4 antibody was raised against a 17 amino acid synthetic peptide near the center of human REEP4. The immunogen is located within amino acids 160 - 210 of REEP4.
Target	REEP4
Preservatives	REEP4 Antibody is supplied in PBS containing 0.02% sodium azide.
Form/Appearance	Liquid
Concentration	1 mg/mL
Storage	REEP4 antibody can be stored at 4°C for three months and -20°C, stable for up to one year. As with all antibodies care should be taken to avoid repeated freeze thaw cycles. Antibodies should not be exposed to prolonged high temperatures.
Note	For research use only
Application notes	REEP4 antibody can be used for detection of REEP4 by Western blot at 1 µg/mL. Antibody validated: Western Blot in human samples. All other applications and species not yet tested.
Isotype	IgG
Clonality	Polyclonal
Uniprot ID	Q9H6H4
NCBI	EAW63714
Dilution Range	REEP4 antibody can be used for detection of REEP4 by Western blot at 1 µg/mL. Antibody validated: Western Blot in human samples. All other applications and species not yet tested.
Expiration Date	12 months from date of receipt.



Western blot analysis of REEP4 in human ...