
Product Datasheet

RUSC2 Antibody (orb1238249)

Description

RUSC2 Antibody

Species/Host

Rabbit

Reactivity

Human

Conjugation

Unconjugated

Tested

ELISA, IHC-P

Applications
Immunogen

RUSC2 antibody was raised against a 15 amino acid synthetic peptide from near the carboxy terminus of human RUSC2. The immunogen is located within amino acids 1410 - 1460 of RUSC2.

Target

RUSC2

Preservatives

RUSC2 Antibody is supplied in PBS containing 0.02% sodium azide.

Form/Appearance

Liquid

Concentration

1 mg/mL

Storage

RUSC2 antibody can be stored at 4°C for three months and -20°C, stable for up to one year. As with all antibodies care should be taken to avoid repeated freeze thaw cycles. Antibodies should not be exposed to prolonged high temperatures.

Note

For research use only

Application notes

RUSC2 antibody can be used for detection of RUSC2 by immunohistochemistry at 5 µg/mL. Antibody validated: Immunohistochemistry in human samples. All other applications and species not yet tested.

Isotype

IgG

Clonality

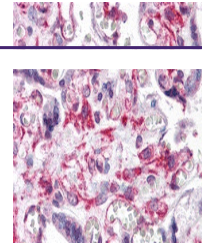
Polyclonal

Uniprot ID
[Q8N2Y8](#)
NCBI
[NP_001098673](#)
Dilution Range

RUSC2 antibody can be used for detection of RUSC2 by immunohistochemistry at 5 µg/mL. Antibody validated: Immunohistochemistry in human samples. All other applications and species not yet tested.

Expiration Date

12 months from date of receipt.



Immunohistochemistry of RUSC2 in human p...