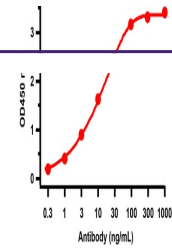


---

## Product Datasheet

### ORF10 Antibody (orb1238240)

|                            |  |
|----------------------------|--|
| <b>Description</b>         | ORF10 Antibody   |
| <b>Species/Host</b>        | Rabbit   |
| <b>Reactivity</b>          | Virus  |
| <b>Conjugation</b>         | Unconjugated   |
| <b>Tested Applications</b> | ELISA  |
| <b>Immunogen</b>           | Anti-SARS-CoV-2 (COVID-19) ORF10 antibody (orb1238240) was raised against a peptide corresponding to 13 amino acids near the carboxyl terminus of SARS-CoV-2 (COVID-19) ORF10 protein. The immunogen is located within the last 50 amino acids of the SARS-CoV-2 (COVID-19) ORF10 protein. |
| <b>Target</b>              | ORF10  |
| <b>Preservatives</b>       | SARS-CoV-2 (COVID-19) ORF10 antibody is supplied in PBS containing 0.02% sodium azide.   |
| <b>Form/Appearance</b>     | Liquid   |
| <b>Concentration</b>       | 1 mg/mL  |
| <b>Storage</b>             | SARS-CoV-2 (COVID-19) ORF10 antibody can be stored at 4°C for three months and -20°C, stable for up to one year. As with all antibodies care should be taken to avoid repeated freeze thaw cycles. Antibodies should not be exposed to prolonged high temperatures.                        |
| <b>Note</b>                | For research use only  |
| <b>Isotype</b>             | IgG  |
| <b>Clonality</b>           | Polyclonal   |
| <b>MW</b>                  | 4kD  |
| <b>NCBI</b>                | <a href="#">Q5J03260.1</a>   |
| <b>Dilution Range</b>      | Antibody validated: SARS-CoV-2 (COVID-19) ORF10 antibody can detect 2 ng of free peptide at 1 µg/mL in ELISA. All other applications and species not yet tested.   |
| <b>Expiration Date</b>     | 12 months from date of receipt.  |



ELISA Validation. Antibodies: SARS-CoV-2...