

---

## Product Datasheet

### SARS-CoV Envelope Antibody (orb1238237)

**Description**

SARS-CoV Envelope Antibody

**Species/Host**

Rabbit

**Reactivity**

Virus

**Conjugation**

Unconjugated

**Tested**

ELISA

**Applications**

**Immunogen**

Anti-SARS-CoV Envelope antibody (orb1238237) was raised against a peptide corresponding to 11 amino acids near the carboxy terminus of SARS-CoV Envelope protein. The immunogen is located within the last 50 amino acids of SARS-CoV Envelope.

**Target**

E

**Preservatives**

SARS-CoV Envelope Antibody is supplied in PBS containing 0.02% sodium azide.

**Form/Appearance**

Liquid

**Concentration**

1 mg/mL

**Storage**

SARS-CoV Envelope antibody can be stored at 4°C for three months and -20°C, stable for up to one year. As with all antibodies care should be taken to avoid repeated freeze thaw cycles. Antibodies should not be exposed to prolonged high temperatures.

**Note**

For research use only

**Isotype**

IgG

**Clonality**

Polyclonal

**Uniprot ID**

[P59637](#)

**NCBI**

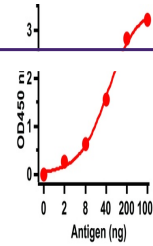
[P59637](#)

**Dilution Range**

SARS-CoV Envelope antibody can be used for the detection of SARS-CoV Envelope protein in ELISA. It will detect 5 ng of free peptide at 1 µg/mL.

**Expiration Date**

12 months from date of receipt.



ELISA Test.  
Antibodies:  
SARS-CoV  
Envelop...