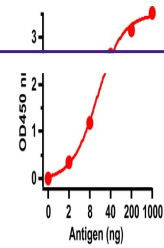


---

## Product Datasheet

### SARS-CoV Spike Antibody (orb1238232)

<b>Description</b>	SARS-CoV Spike Antibody
<b>Species/Host</b>	Rabbit
<b>Reactivity</b>	Virus
<b>Conjugation</b>	Unconjugated
<b>Tested Applications</b>	ELISA
<b>Immunogen</b>	Anti-SARS-CoV Spike antibody (orb1238232) was raised against a peptide corresponding to 15 amino acids near the center of SARS-CoV Spike glycoprotein. The immunogen is located within amino acids 650-700 of SARS-CoV Spike.
<b>Target</b>	S
<b>Preservatives</b>	SARS-CoV Spike antibody is supplied in PBS containing 0.02% sodium azide.
<b>Form/Appearance</b>	Liquid
<b>Concentration</b>	1 mg/mL
<b>Storage</b>	SARS-CoV Spike antibody can be stored at 4°C for three months and -20°C, stable for up to one year. As with all antibodies care should be taken to avoid repeated freeze thaw cycles. Antibodies should not be exposed to prolonged high temperatures.
<b>Note</b>	For research use only
<b>Isotype</b>	IgG
<b>Clonality</b>	Polyclonal
<b>Uniprot ID</b>	<a href="#">P59594</a>
<b>NCBI</b>	<a href="#">P59594</a>
<b>Dilution Range</b>	SARS-CoV Spike antibody can be used for the detection of SARS-CoV Spike protein in ELISA. It will detect 5 ng of free peptide at 1 µg/mL.
<b>Expiration Date</b>	12 months from date of receipt.



ELISA Test.  
Antibodies:  
SARS-CoV  
Spike A...