
Product Datasheet

SDHAF2 Antibody (orb1238230)

Description

SDHAF2 Antibody

Species/Host

Gallus

Reactivity

Human, Mouse, Rat

Conjugation

Unconjugated

Tested Applications

ELISA, WB

Immunogen

SDHAF2 antibody was raised against a 16 amino acid synthetic peptide near the amino terminus of human SDHAF2. The immunogen is located within the first 50 amino acids of SDHAF2.

Target

SDHAF2

Preservatives

SDHAF2 Antibody is supplied in PBS containing 0.02% sodium azide.

Form/Appearance

Liquid

Concentration

1 mg/mL

Storage

SDHAF2 antibody can be stored at 4°C for three months and -20°C, stable for up to one year. As with all antibodies care should be taken to avoid repeated freeze thaw cycles. Antibodies should not be exposed to prolonged high temperatures.

Note

For research use only

Application notes

SDHAF2 antibody can be used for detection of SDHAF2 by Western blot at 1 µg/mL. Antibody validated: Western Blot in rat samples. All other applications and species not yet tested.

Isotype

IgY

Clonality

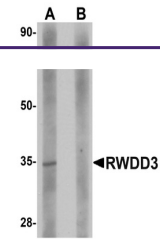
Polyclonal

Uniprot ID
[Q9NX18](#)
NCBI
[NP_060311](#)
Dilution Range

SDHAF2 antibody can be used for detection of SDHAF2 by Western blot at 1 µg/mL. Antibody validated: Western Blot in rat samples. All other applications and species not yet tested.

Expiration Date

12 months from date of receipt.



Western blot analysis of SDHAF2 in rat l...