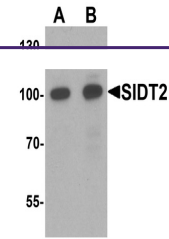

Product Datasheet

SIDT2 Antibody (orb1238219)

Description	SIDT2 Antibody
Species/Host	Rabbit
Reactivity	Human, Mouse, Rat
Conjugation	Unconjugated
Tested Applications	ELISA, WB
Immunogen	Rabbit polyclonal SIDT2 antibody was raised against an 18 amino acid peptide near the amino terminus of human SIDT2. The immunogen is located within the first 50 amino acids of SIDT2.
Target	SIDT2
Preservatives	SIDT2 Antibody is supplied in PBS containing 0.02% sodium azide.
Form/Appearance	Liquid
Concentration	1 mg/mL
Storage	SIDT2 antibody can be stored at 4°C for three months and -20°C, stable for up to one year.
Note	For research use only
Application notes	SIDT2 antibody can be used for detection of SIDT2 by Western blot at 0.5 - 1 µg/mL. Antibody validated: Western Blot in mouse samples. All other applications and species not yet tested.
Isotype	IgG
Clonality	Polyclonal
MW	Predicted: 92 kDa
Uniprot ID	Q8NBJ9
NCBI	NP_001035545
Dilution Range	SIDT2 antibody can be used for detection of SIDT2 by Western blot at 0.5 - 1 µg/mL. Antibody validated: Western Blot in mouse samples. All other applications and species not yet tested.
Expiration Date	12 months from date of receipt.



Western blot analysis of SIDT2 in mouse ...