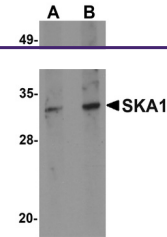


---

## Product Datasheet

### SKA1 Antibody (orb1238213)

|                            |  |
|----------------------------|--|
| <b>Description</b>         | SKA1 Antibody  |
| <b>Species/Host</b>        | Rabbit   |
| <b>Reactivity</b>          | Human, Mouse, Rat  |
| <b>Conjugation</b>         | Unconjugated   |
| <b>Tested Applications</b> | ELISA, WB  |
| <b>Immunogen</b>           | SKA1 antibody was raised against a 13 amino acid synthetic peptide from near the carboxy terminus of human SKA1. The immunogen is located within amino acids 180 - 230 of SKA1.  |
| <b>Target</b>              | SKA1   |
| <b>Preservatives</b>       | SKA1 Antibody is supplied in PBS containing 0.02% sodium azide.  |
| <b>Form/Appearance</b>     | Liquid   |
| <b>Concentration</b>       | 1 mg/mL  |
| <b>Storage</b>             | SKA1 antibody can be stored at 4°C for three months and -20°C, stable for up to one year. As with all antibodies care should be taken to avoid repeated freeze thaw cycles. Antibodies should not be exposed to prolonged high temperatures. |
| <b>Note</b>                | For research use only  |
| <b>Application notes</b>   | SKA1 antibody can be used for detection of SKA1 by Western blot at 0.5 - 1 µg/mL. Antibody validated: Western Blot in human samples. All other applications and species not yet tested.  |
| <b>Isotype</b>             | IgG  |
| <b>Clonality</b>           | Polyclonal   |
| <b>Uniprot ID</b>          | <a href="#">Q96BD8</a>   |
| <b>NCBI</b>                | <a href="#">Q96BD8</a>   |
| <b>Dilution Range</b>      | SKA1 antibody can be used for detection of SKA1 by Western blot at 0.5 - 1 µg/mL. Antibody validated: Western Blot in human samples. All other applications and species not yet tested.  |
| <b>Expiration Date</b>     | 12 months from date of receipt.  |



Western blot analysis of SKA1 in A549 ce...