
Product Datasheet

DPPA3 Antibody (orb1238195)

Description

DPPA3 Antibody

Species/Host

Rabbit

Reactivity

Human, Mouse, Rat

Conjugation

Unconjugated

Tested Applications

ELISA, WB

Immunogen

Stella antibody was raised against a 13 amino acid synthetic peptide from near the carboxy terminus of human Stella. The immunogen is located within the last 50 amino acids of Stella.

Target

DPPA3

Preservatives

Stella Antibody is supplied in PBS containing 0.02% sodium azide.

Form/Appearance

Liquid

Concentration

1 mg/mL

Storage

Stella antibody can be stored at 4°C for three months and -20°C, stable for up to one year. As with all antibodies care should be taken to avoid repeated freeze thaw cycles. Antibodies should not be exposed to prolonged high temperatures.

Note

For research use only

Application notes

Stella antibody can be used for detection of Stella by Western blot at 1 - 2 µg/mL. Antibody validated: Western Blot in human samples. All other applications and species not yet tested.

Isotype

IgG

Clonality

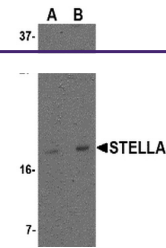
Polyclonal

Uniprot ID
[Q6W0C5](#)
NCBI
[NP_954980](#)
Dilution Range

Stella antibody can be used for detection of Stella by Western blot at 1 - 2 µg/mL. Antibody validated: Western Blot in human samples. All other applications and species not yet tested.

Expiration Date

12 months from date of receipt.



Western blot analysis of Stella in 293 C...