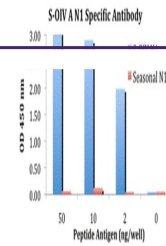

Product Datasheet

NA Antibody (orb1238188)

Description	NA Antibody
Species/Host	Rabbit
Reactivity	Virus
Conjugation	Unconjugated
Tested Applications	ELISA
Immunogen	Neuraminidase antibody was raised against a synthetic peptide from the novel swine influenza Neuraminidase protein. This antibody is a cognate pair with product 5247. The immunogen is located within amino acids 50 - 100 of Swine H1N1 Neuraminidase.
Target	NA
Preservatives	Swine H1N1 Neuraminidase Antibody is supplied in PBS containing 0.02% sodium azide.
Form/Appearance	Liquid
Concentration	1 mg/mL
Storage	Swine H1N1 Neuraminidase antibody can be stored at 4°C up to one year. Antibodies should not be exposed to prolonged high temperatures.
Note	For research use only
Application notes	Neuraminidase antibody can be used for the detection of the Neuraminidase protein from the H1N1 strain of swine influenza A in ELISA. It will detect 2 ng of free peptide at 1 µg/mL
Isotype	IgG
Clonality	Polyclonal
Uniprot ID	C4AL28
NCBI	ACQ76308
Dilution Range	Neuraminidase antibody can be used for the detection of the Neuraminidase protein from the H1N1 strain of swine influenza A in ELISA. It will detect 2 ng of free peptide at 1 µg/mL
Expiration Date	12 months from date of receipt.



ELISA results using Swine H1N1 Neuramini...