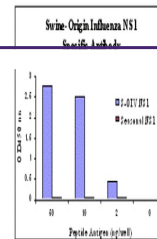


---

## Product Datasheet

### NS1 Antibody (orb1238187)

<b>Description</b>	NS1 Antibody
<b>Species/Host</b>	Rabbit
<b>Reactivity</b>	Virus
<b>Conjugation</b>	Unconjugated
<b>Tested Applications</b>	ELISA
<b>Immunogen</b>	NS1 antibody was raised against a synthetic peptide from the swine-Origin Influenza NS1. The immunogen is located within the last 50 amino acids of Swine H1N1 Nonstructural Protein 1.
<b>Target</b>	NS1
<b>Preservatives</b>	Swine H1N1 Nonstructural Protein 1 Antibody is supplied in PBS containing 0.02% sodium azide.
<b>Form/Appearance</b>	Liquid
<b>Concentration</b>	1 mg/mL
<b>Storage</b>	Swine H1N1 Nonstructural Protein 1 antibody can be stored at 4°C for three months and -20°C, stable for up to one year. As with all antibodies care should be taken to avoid repeated freeze thaw cycles. Antibodies should not be exposed to prolonged high temperatures.
<b>Note</b>	For research use only
<b>Application notes</b>	NS1 antibody can be used for the detection of the NS1 protein from the H1N1 strain of Swine-Origin Influenza A in ELISA.
<b>Isotype</b>	IgG
<b>Clonality</b>	Polyclonal
<b>Uniprot ID</b>	<a href="#">C3W5S7</a>
<b>NCBI</b>	<a href="#">ACP41110</a>
<b>Dilution Range</b>	NS1 antibody can be used for the detection of the NS1 protein from the H1N1 strain of Swine-Origin Influenza A in ELISA.
<b>Expiration Date</b>	12 months from date of receipt.



ELISA results using Swine H1N1 Nonstruct...