
Product Datasheet

TAB2 Antibody (orb1238184)

Description

TAB2 Antibody

Species/Host

Rabbit

Reactivity

Human

Conjugation

Unconjugated

Tested Applications

ELISA, IHC-P

Immunogen

TAB2 antibody was raised against a 14 amino acid synthetic peptide near the carboxy terminus of human TAB2. The immunogen is located within the last 50 amino acids of TAB2.

Target

TAB2

Preservatives

TAB2 Antibody is supplied in PBS containing 0.02% sodium azide.

Form/Appearance

Liquid

Concentration

1 mg/mL

Storage

TAB2 antibody can be stored at 4°C for three months and -20°C, stable for up to one year. As with all antibodies care should be taken to avoid repeated freeze thaw cycles. Antibodies should not be exposed to prolonged high temperatures.

Note

For research use only

Application notes

TAB2 antibody can be used for detection of TAB2 by immunohistochemistry at 5 µg/mL. Antibody validated: Immunohistochemistry in human samples. All other applications and species not yet tested.

Isotype

IgG

Clonality

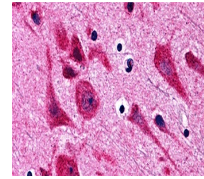
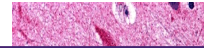
Polyclonal

Uniprot ID
[Q9NYJ8](#)
NCBI
[NP_055908](#)
Dilution Range

TAB2 antibody can be used for detection of TAB2 by immunohistochemistry at 5 µg/mL. Antibody validated: Immunohistochemistry in human samples. All other applications and species not yet tested.

Expiration Date

12 months from date of receipt.



Immunohistochemistry of TAB2 in human br...