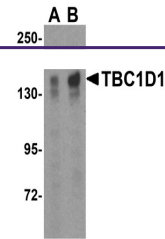


---

## Product Datasheet

### TBC1D1 Antibody (orb1238182)

Description	TBC1D1 Antibody
<b>Species/Host</b>	Rabbit
<b>Reactivity</b>	Human
<b>Conjugation</b>	Unconjugated
<b>Tested Applications</b>	ELISA, WB
<b>Immunogen</b>	TBC1D1 antibody was raised against a 22 amino acid synthetic peptide from near the carboxy terminus of human TBC1D1. The immunogen is located within the last 50 amino acids of TBC1D1.
<b>Target</b>	TBC1D1
<b>Preservatives</b>	TBC1D1 Antibody is supplied in PBS containing 0.02% sodium azide.
<b>Form/Appearance</b>	Liquid
<b>Concentration</b>	1 mg/mL
<b>Storage</b>	TBC1D1 antibody can be stored at 4°C for three months and -20°C, stable for up to one year. As with all antibodies care should be taken to avoid repeated freeze thaw cycles. Antibodies should not be exposed to prolonged high temperatures.
<b>Note</b>	For research use only
<b>Application notes</b>	TBC1D1 antibody can be used for detection of TBC1D1 by Western blot at 2 µg/mL. Antibody validated: Western Blot in human samples. All other applications and species not yet tested.
<b>Isotype</b>	IgG
<b>Clonality</b>	Polyclonal
<b>MW</b>	Predicted: 128 kDa Observed: 140 kDa
<b>Uniprot ID</b>	<a href="#">Q86T10</a>
<b>NCBI</b>	<a href="#">NP_055988</a>
<b>Dilution Range</b>	TBC1D1 antibody can be used for detection of TBC1D1 by Western blot at 2 µg/mL. Antibody validated: Western Blot in human samples. All other applications and species not yet tested.
<b>Expiration Date</b>	12 months from date of receipt.



Western blot analysis of TBC1D1 expressi...