
Product Datasheet

TMEM147 Antibody (orb1238168)

Description

TMEM147 Antibody

Species/Host

Rabbit

Reactivity

Human, Mouse, Rat

Conjugation

Unconjugated

Tested

ELISA, WB

Applications
Immunogen

TMEM147 antibody was raised against a 13 amino acid synthetic peptide near the center of human TMEM147. The immunogen is located within amino acids 70 - 120 of TMEM147.

Target

TMEM147

Preservatives

TMEM147 Antibody is supplied in PBS containing 0.02% sodium azide.

Form/Appearance

Liquid

Concentration

1 mg/mL

Storage

TMEM147 antibody can be stored at 4°C for three months and -20°C, stable for up to one year. As with all antibodies care should be taken to avoid repeated freeze thaw cycles. Antibodies should not be exposed to prolonged high temperatures.

Note

For research use only

Application notes

TMEM147 antibody can be used for detection of TMEM147 by Western blot at 1 - 2 µg/mL. Antibody validated: Western Blot in human samples. All other applications and species not yet tested.

Isotype

IgG

Clonality

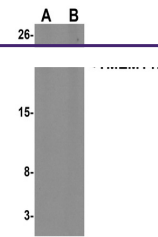
Polyclonal

Uniprot ID
[Q9BVK8](#)
NCBI
[NP_116024](#)
Dilution Range

TMEM147 antibody can be used for detection of TMEM147 by Western blot at 1 - 2 µg/mL. Antibody validated: Western Blot in human samples. All other applications and species not yet tested.

Expiration Date

12 months from date of receipt.



Western blot analysis of TMEM147 in Daud...