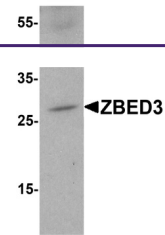

Product Datasheet

ZBED3 Antibody (orb1238138)

Description	ZBED3 Antibody
Species/Host	Rabbit
Reactivity	Human, Mouse, Rat
Conjugation	Unconjugated
Tested Applications	ELISA, WB
Immunogen	ZBED3 antibody was raised against a 17 amino acid synthetic peptide from near the amino terminus of human ZBED3. The immunogen is located within the first 50 amino acids of ZBED3.
Target	ZBED3
Preservatives	ZBED3 Antibody is supplied in PBS containing 0.02% sodium azide.
Form/Appearance	Liquid
Concentration	1 mg/mL
Storage	ZBED3 antibody can be stored at 4°C for three months and -20°C, stable for up to one year. As with all antibodies care should be taken to avoid repeated freeze thaw cycles. Antibodies should not be exposed to prolonged high temperatures.
Note	For research use only
Application notes	ZBED3 antibody can be used for detection of ZBED3 by Western blot at 1 - 2 µg/mL. Despite its predicted molecular weight, ZBED3 often migrates at a higher position in SDS-PAGE. Antibody validated: Western Blot in mouse samples. All other applications and species not yet tested.
Isotype	IgG
Clonality	Polyclonal
MW	Predicted: 26 kDa Observed: 28 kDa
Uniprot ID	Q96IU2
NCBI	NP_115743
Dilution Range	ZBED3 antibody can be used for detection of ZBED3 by Western blot at 1 - 2 µg/mL. Despite its predicted molecular weight, ZBED3 often migrates at a higher position in SDS-PAGE. Antibody validated: Western Blot in mouse samples. All other applications and species not yet tested.



Western blot analysis of ZBED3 in A-20 c...