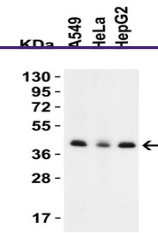


---

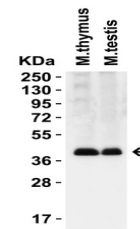
## Product Datasheet

### PEX3 Antibody (orb1238075)

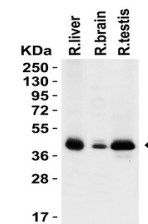
Description	PEX3 Antibody
<b>Species/Host</b>	Rabbit
<b>Reactivity</b>	Human, Mouse, Rat
<b>Conjugation</b>	Unconjugated
<b>Tested Applications</b>	ELISA, IF, WB
<b>Immunogen</b>	Anti-PEX3 antibody (orb1238075) was raised against a peptide corresponding to 12 amino acids near the carboxyl terminal of human PEX3. The immunogen is located within last 50 amino acids of PEX3.
<b>Target</b>	PEX3
<b>Preservatives</b>	PEX3 Antibody is supplied in PBS containing 0.02% sodium azide.
<b>Form/Appearance</b>	Liquid
<b>Concentration</b>	1 mg/mL
<b>Storage</b>	PEX3 antibody can be stored at 4 °C for three months and -20 °C, stable for up to one year. As with all antibodies care should be taken to avoid repeated freeze thaw cycles. Antibodies should not be exposed to prolonged high temperatures.
<b>Note</b>	For research use only
<b>Isotype</b>	IgG
<b>Clonality</b>	Polyclonal
<b>MW</b>	Predicted: 42kD Observed: 42 kD
<b>Uniprot ID</b>	<a href="#">P56589</a>
<b>NCBI</b>	<a href="#">P56589</a>
<b>Dilution Range</b>	WB: 2 µg/mL; IF: 20 µg/mL. Antibody validated: Western Blot in human, mouse and rat samples; Immunofluorescence in human, mouse and rat samples. All other applications and species not yet tested.
<b>Expiration Date</b>	12 months from date of receipt.



WB Validation in Human Cell Lines. Loadi...



Western Blot Validation in Mouse Tissues...



Western Blot Validation in Rat Tissues.

...