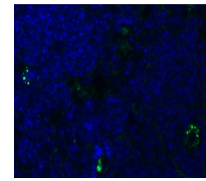
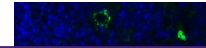
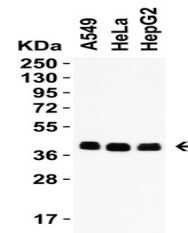

Product Datasheet

PEX3 Antibody (orb1238074)

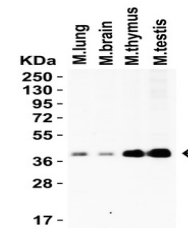
Description	PEX3 Antibody
Species/Host	Rabbit
Reactivity	Human, Mouse, Rat
Conjugation	Unconjugated
Tested Applications	ELISA, IF, WB
Immunogen	Anti-PEX3 antibody (orb1238074) was raised against a peptide corresponding to 14 amino acids near the center of human PEX3. The immunogen is located within the center of PEX3.
Target	PEX3
Preservatives	PEX3 Antibody is supplied in PBS containing 0.02% sodium azide.
Form/Appearance	Liquid
Concentration	1 mg/mL
Storage	PEX3 antibody can be stored at 4°C up to one year. Antibodies should not be exposed to prolonged high temperatures.
Note	For research use only
Isotype	IgG
Clonality	Polyclonal
MW	Predicted: 42kD Observed: 42 kD
Uniprot ID	P56589
NCBI	P56589
Dilution Range	WB: 2 µg/mL; IF: 20 µg/mL. Antibody validated: Western Blot in human, mouse and rat samples; Immunofluorescence in human, mouse and rat samples. All other applications and species not yet tested.
Expiration Date	12 months from date of receipt.



Immunofluorescence Validation of PEX3 in...



WB Validation in Human Cell Lines. Loadi...



Western Blot Validation in Mouse Tissues...