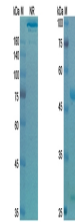


Product Datasheet

Gilvetmab (PDCD1/PD1/CD279) - Research Grade Biosimilar Antibody (orb1237653)

Description	Gilvetmab (PDCD1/PD1/CD279) - Research Grade Biosimilar Antibody
Conjugation	Unconjugated
Immunogen	Caninized / PDCD1/PD1/CD279 [Canis lupus familiaris]
Preservatives	PBS buffer pH 7.5
Concentration	batch dependent
Storage	Use a manual defrost freezer and avoid repeated freeze thaw cycles. Store at 2 to 8 °C for 1-2 weeks. Store at -20 °C for 12 months. Store at -80 °C for long term storage.
Note	For research use only
Isotype	IgG2-kappa
Clonality	Recombinant
Source	CHO cells
Expiration Date	12 months from date of receipt.



SDS-PAGE Image