

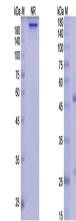
Product Datasheet

Lirilumab (KIRD2 subgroup) - Research Grade Biosimilar Antibody (orb1237572)

Description	Lirilumab (KIRD2 subgroup) - Research Grade Biosimilar Antibody
Conjugation	Unconjugated
Immunogen	Homo sapiens / KIRD2 subgroup [Homo sapiens]
Preservatives	PBS buffer pH 7.5
Concentration	batch dependent
Storage	Use a manual defrost freezer and avoid repeated freeze thaw cycles. Store at 2 to 8 °C for 1-2 weeks. Store at -20 °C for 12 months. Store at -80 °C for long term storage.
Note	For research use only
Isotype	IgG4-kappa
Clonality	Recombinant
Source	CHO cells
Expiration Date	12 months from date of receipt.



Lirilumab binds with KIRD2



SDS-PAGE Image