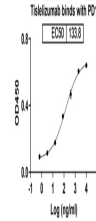


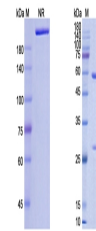
## Product Datasheet

# Tislelizumab (PDCD1/PD1/ CD279) - Research Grade Biosimilar Antibody (orb1237306)

<b>Description</b>	Tislelizumab (PDCD1/PD1/ CD279) - Research Grade Biosimilar Antibody
<b>Conjugation</b>	Unconjugated
<b>Immunogen</b>	Humanized / PDCD1/PD1/ CD279 [Homo sapiens]
<b>Preservatives</b>	PBS buffer pH 7.5
<b>Concentration</b>	batch dependent
<b>Storage</b>	Use a manual defrost freezer and avoid repeated freeze thaw cycles. Store at 2 to 8 °C for 1-2 weeks. Store at -20 °C for 12 months. Store at -80 °C for long term storage.
<b>Note</b>	For research use only
<b>Isotype</b>	IgG4-kappa
<b>Clonality</b>	Recombinant
<b>Source</b>	CHO cells
<b>Expiration Date</b>	12 months from date of receipt.



Tislelizumab binds with PD1



SDS-PAGE Image