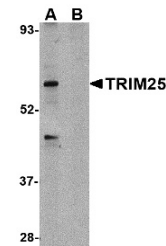


## Product Datasheet

### TRIM25 Peptide (orb1235309)

<b>Description</b>	TRIM25 Peptide
<b>Tested Applications</b>	Blocking
<b>Target</b>	TRIM25
<b>Preservatives</b>	PBS pH 7.2 (10 mM NaH <sub>2</sub> PO <sub>4</sub> , 10 mM Na <sub>2</sub> HPO <sub>4</sub> , 130 mM NaCl) containing 0.1% bovine serum albumin and 0.02% sodium azide
<b>Form/Appearance</b>	Liquid
<b>Concentration</b>	200 ug/mL
<b>Storage</b>	Store TRIM25 peptide at -20°C, stable for one year.
<b>Note</b>	For research use only
<b>Application notes</b>	TRIM25 peptide is used for blocking the activity of TRIM25 antibody.
<b>Uniprot ID</b>	<b>Q14258</b>
<b>NCBI</b>	<b>NP_005073</b>
<b>Expiration Date</b>	6 months from date of receipt.



Western blot analysis of TRIM25 in HeLa ...