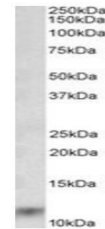


## Product Datasheet

### S100A8 antibody (orb12338)

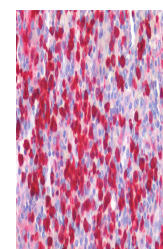
<b>Description</b>	Goat polyclonal antibody to S100A8
<b>Species/Host</b>	Goat
<b>Reactivity</b>	Human
<b>Conjugation</b>	Unconjugated
<b>Tested Applications</b>	ELISA, IF, IHC, WB
<b>Target</b>	S100A8
<b>Preservatives</b>	Supplied at 0.5 mg/ml in Tris saline, 0.02% sodium azide, pH 7.3 with 0.5% bovine serum albumin. Aliquot and store at -20°C. Minimize freezing and thawing.
<b>Storage</b>	Aliquot and store at -20°C. Minimize freezing and thawing.
<b>Note</b>	For research use only
<b>Protein Sequence</b>	KGADVWFKELDINT
<b>Clonality</b>	Polyclonal
<b>MW</b>	10.8
<b>Entrez</b>	<b>6279</b>
<b>Dilution Range</b>	ELISA: 1:32000, WB: 0.03-0.1 µg/ml, IHC-P: 5 µg/ml
<b>Expiration Date</b>	12 months from date of receipt.



Western blot analysis of Human Lung lysa...



orb12338 (0.03 µg/mL) staining of Human...



orb12338 (5 µg/mL) staining of paraffin...