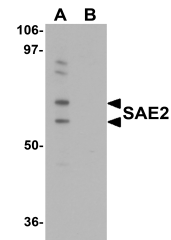


Product Datasheet

SAE2 Peptide (orb1232583)

Description	SAE2 Peptide
Tested Applications	Blocking
Target	UBA2
Preservatives	PBS pH 7.2 (10 mM NaH ₂ PO ₄ , 10 mM Na ₂ HPO ₄ , 130 mM NaCl) containing 0.1% bovine serum albumin and 0.02% sodium azide
Form/Appearance	Liquid
Concentration	200 ug/mL
Storage	Store SAE2 peptide at -20°C, stable for one year.
Note	For research use only
Application notes	SAE2 peptide is used for blocking the activity of SAE2 antibody.
Uniprot ID	Q9UBT2
NCBI	NP_005490
Expiration Date	6 months from date of receipt.



Western blot analysis of SAE2 in 293 cel...