

## Product Datasheet

### Human ACE2 Recombinant Protein (orb1231601)

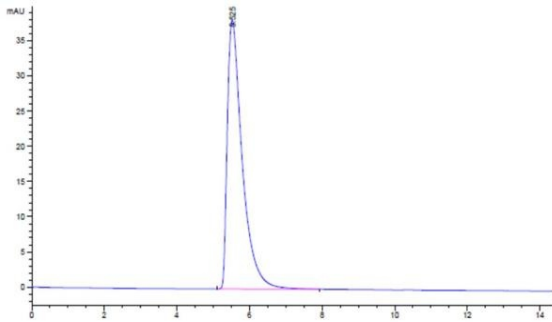
<b>Description</b>	Human ACE2 Recombinant Protein
<b>Tested Applications</b>	ELISA, WB
<b>Preservatives</b>	20mM PB (pH 7.4). 5 % trehalose is added as protectant before lyophilization.
<b>Form/Appearance</b>	Lyophilized
<b>Storage</b>	Store in working aliquots at -20°C. Avoid freeze/thaw cycles.
<b>Tag</b>	His-Avi Tag
<b>Note</b>	For research use only
<b>Application notes</b>	SDS-PAGE
<b>Protein Sequence</b>	Gln18- Ser740
<b>Purity</b>	> 95% as determined by Bis-Tris PAGE; > 95% as determined by HPLC
<b>Source</b>	HEK293 cells
<b>MW</b>	Predicted: 86.5kD Observed: 95-110kD due to glycosylation
<b>NCBI</b>	<b>Q9BYF1</b>
<b>Expiration Date</b>	6 months from date of receipt.

#### Biorbyt Ltd.

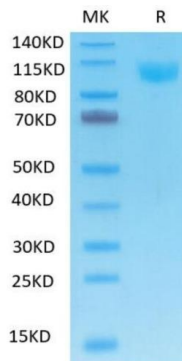
7 Signet Court, Swann's Road,  
Cambridge, CB5 8LA, United Kingdom  
Email: [info@biorbyt.com](mailto:info@biorbyt.com), [support@biorbyt.com](mailto:support@biorbyt.com)  
Phone: [+44 \(0\) 1223 859-353](tel:+44(0)1223859353) | Fax: [+1 \(415\) 651-8558](tel:+1(415)6518558)

#### Biorbyt LLC.

68 TW Alexander Drive,  
Durham, NC, 27713, United States  
Email: [info@biorbyt.com](mailto:info@biorbyt.com), [support@biorbyt.com](mailto:support@biorbyt.com)  
Phone: [+1 \(415\) 906-5211](tel:+1(415)9065211) | Fax: [+1 \(415\) 651-8558](tel:+1(415)6518558)



The purity of human ACE2 is greater than 95% as determined by SEC-HPLC



Recombinant human ACE2 on Tris-Bis PAGE under reduced condition. The purity is greater than 95%.

**Biorbyt Ltd.**

7 Signet Court, Swann's Road,  
Cambridge, CB5 8LA, United Kingdom

Email: [info@biorbyt.com](mailto:info@biorbyt.com), [support@biorbyt.com](mailto:support@biorbyt.com)

Phone: [+44 \(0\) 1223 859-353](tel:+44(0)1223859353) | Fax: [+1 \(415\) 651-8558](tel:+1(415)6518558)

**Biorbyt LLC.**

68 TW Alexander Drive,  
Durham, NC, 27713, United States

Email: [info@biorbyt.com](mailto:info@biorbyt.com), [support@biorbyt.com](mailto:support@biorbyt.com)

Phone: [+1 \(415\) 906-5211](tel:+1(415)9065211) | Fax: [+1 \(415\) 651-8558](tel:+1(415)6518558)