

---

## Product Datasheet

### **CLEC12A / MICL / CLL-1 Recombinant Protein (orb1231538)**

**Description**

CLEC12A / M1CL / CLL-1 Recombinant Protein


**Tested Applications**

WB

**Target**

Clec12a

**Preservatives**

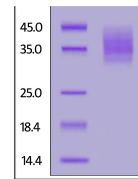
PBS, pH 7.4

**Form/Appearance**

Lyophilized

**Storage**

Lyophilized Protein should be stored at -20°C or lower for long term storage. Upon reconstitution, working aliquots should be stored at -20°C or -70°C. Avoid repeated freeze-thaw cycles.



Rat  
CLEC12A,  
His Tag on  
SDS-PAGE  
under r...

**Tag**

His Tag

**Note**

For research use only

**Application notes**

This protein carries a polyhistidine tag at the N-terminus. The protein has a calculated MW of 26.0 kDa. The protein migrates as 32-45 kDa under reducing (R) condition (SDS-PAGE) due to glycosylation.

**Protein Sequence**

Tyr 65 - Leu 269

**Purity**

&gt; 90% as determined by SDS-PAGE.

**Source**

HEK293 cells

**MW**

26.0 kDa

**NCBI**
[NP\\_001128188.1](https://www.ncbi.nlm.nih.gov/nuccore/NP_001128188.1)
**Dilution Range**

This protein carries a polyhistidine tag at the N-terminus. The protein has a calculated MW of 26.0 kDa. The protein migrates as 32-45 kDa under reducing (R) condition (SDS-PAGE) due to glycosylation.

**Expiration Date**

6 months from date of receipt.