
Product Datasheet

PD-L1 / B7-H1 (19-134) Recombinant Protein (orb1231537)

Description

PD-L1 / B7-H1 (19-134) Recombinant Protein


Tested Applications

ELISA, WB

Target

CD274

Preservatives

PBS, pH 7.4

Form/Appearance

Lyophilized

Storage

Lyophilized Protein should be stored at -20°C or lower for long term storage. Upon reconstitution, working aliquots should be stored at -20°C or -70°C. Avoid repeated freeze-thaw cycles.

Tag

His Tag

Note

For research use only

Application notes

This protein carries a polyhistidine tag at the C-terminus. The protein has a calculated MW of 15.2 kDa. The protein migrates as 17 kDa and 19 kDa under reducing (R) condition (SDS-PAGE) due to glycosylation.

Protein Sequence

Phe 19 - Tyr 134

Purity

> 95% as determined by SDS-PAGE.

Source

HEK293 cells

MW

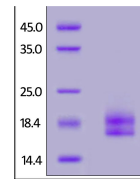
15.2 kDa

Uniprot ID
[Q9NZQ7](https://www.uniprot.org/uniprot/Q9NZQ7)
NCBI
[NP_054862.1](https://www.ncbi.nlm.nih.gov/nuccore/NP_054862.1)
Dilution Range

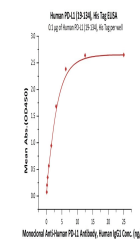
This protein carries a polyhistidine tag at the C-terminus. The protein has a calculated MW of 15.2 kDa. The protein migrates as 17 kDa and 19 kDa under reducing (R) condition (SDS-PAGE) due to glycosylation.

Expiration Date

6 months from date of receipt.



Human PD-L1, His Tag on SDS-PAGE under r...



Immobilized Human PD-L1, His Tag at 1 ug...