

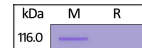
---

## Product Datasheet

### CD200 R1 / CRTR2 Recombinant Protein (orb1231530)

**Description**

CD200 R1 / CRTR2 Recombinant Protein


**Tested Applications**

ELISA, WB

**Target**

CD200R1

**Preservatives**

PBS, pH 7.4

**Form/Appearance**

Lyophilized

**Storage**

Lyophilized Protein should be stored at -20°C or lower for long term storage. Upon reconstitution, working aliquots should be stored at -20°C or -70°C. Avoid repeated freeze-thaw cycles.

**Tag**

His Tag

**Note**

For research use only

**Application notes**

This protein carries a polyhistidine tag at the C-terminus. The protein has a calculated MW of 28.7 kDa. The protein migrates as 48-65 kDa under reducing (R) condition (SDS-PAGE) due to glycosylation.

**Protein Sequence**

Ala 27 - Leu 266

**Purity**

&gt; 90% as determined by SDS-PAGE.

**Source**

HEK293 cells

**MW**

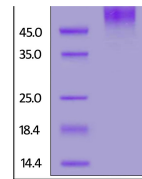
28.7 kDa

**Uniprot ID**
[Q8TD46](#)
**NCBI**
[AAQ19772.1](#)
**Dilution Range**

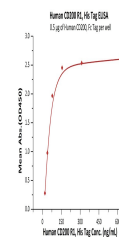
This protein carries a polyhistidine tag at the C-terminus. The protein has a calculated MW of 28.7 kDa. The protein migrates as 48-65 kDa under reducing (R) condition (SDS-PAGE) due to glycosylation.

**Expiration Date**

6 months from date of receipt.



Human  
CD200 R1,  
His Tag on  
SDS-PAGE  
unde...



Immobilized  
Human  
CD200, Fc  
Tag at 5  
ug/...