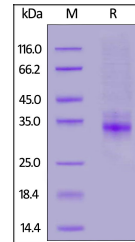


## Product Datasheet

# CLEC12A / MICL / CLL-1 Recombinant Protein (orb1231520)

<b>Description</b>	CLEC12A / MICL / CLL-1 Recombinant Protein
<b>Tested Applications</b>	WB
<b>Preservatives</b>	PBS, pH 7.4
<b>Form/Appearance</b>	Lyophilized
<b>Storage</b>	Lyophilized Protein should be stored at -20°C or lower for long term storage. Upon reconstitution, working aliquots should be stored at -20°C or -70°C. Avoid repeated freeze-thaw cycles.
<b>Tag</b>	His Tag
<b>Note</b>	For research use only
<b>Application notes</b>	This protein carries a polyhistidine tag at the N-terminus. The protein has a calculated MW of 25.7 kDa. The protein migrates as 30-40 kDa under reducing (R) condition (SDS-PAGE) due to glycosylation.
<b>Protein Sequence</b>	Tyr 65 - Arg 267
<b>Purity</b>	> 90% as determined by SDS-PAGE.
<b>Source</b>	HEK293 cells
<b>MW</b>	25.7 kDa
<b>Dilution Range</b>	This protein carries a polyhistidine tag at the N-terminus. The protein has a calculated MW of 25.7 kDa. The protein migrates as 30-40 kDa under reducing (R) condition (SDS-PAGE) due to glycosylation.
<b>Expiration Date</b>	6 months from date of receipt.



Mouse  
CLEC12A,  
His Tag on  
SDS-PAGE  
under...