

---

## Product Datasheet

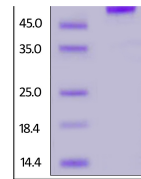
### PLGF / PGF (19-149) Recombinant Protein (orb1231494)

**Description**

PLGF / PGF (19-149) Recombinant Protein


**Tested Applications**

ELISA, WB


**Target**

PGF

**Preservatives**

PBS, pH 7.4

**Form/Appearance**

Lyophilized

**Storage**

Lyophilized Protein should be stored at -20°C or lower for long term storage. Upon reconstitution, working aliquots should be stored at -20°C or -70°C. Avoid repeated freeze-thaw cycles.

Human  
PLGF, Fc  
Tag on SDS-  
PAGE under  
red...

**Tag**

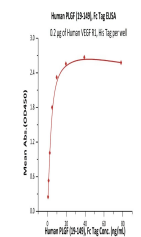
Fc Tag

**Note**

For research use only

**Application notes**

This protein carries a human IgG1 Fc tag at the C-terminus. The protein has a calculated MW of 41.2 kDa. The protein migrates as 50-55 kDa under reducing (R) condition (SDS-PAGE) due to glycosylation.



Immobilized  
Human  
VEGF R1,  
His Tag at 2  
...

**Protein Sequence**

Leu 19 - Arg 149

**Purity**

&gt; 95% as determined by SDS-PAGE.

**Source**

HEK293 cells

**MW**

41.2 kDa

**Uniprot ID**
[P49763](https://www.uniprot.org/uniprot/P49763)
**NCBI**
[NP\\_001193941.1](https://www.ncbi.nlm.nih.gov/nuccore/NP_001193941.1)
**Dilution Range**

This protein carries a human IgG1 Fc tag at the C-terminus. The protein has a calculated MW of 41.2 kDa. The protein migrates as 50-55 kDa under reducing (R) condition (SDS-PAGE) due to glycosylation.

**Expiration Date**

6 months from date of receipt.